

Woodbridge Irrigation District GSA Spotlight



History

- In 1886, Byron Beckwith acquired WID's Pre-1914 water right on the Mokelumne River.
- On June 16, 1924, the Woodbridge Irrigation District was formed.
- In March of 1928, WID purchased the Stockton Mokelumne Canal Company.
- In 1928 and thereafter, WID received additional water rights on the Mokelumne River, Beaver Slough & Pixley Slough.



WID / EBMUD Mokelumne River Surface Water Diversions

- WID's Pre-1914 Water Right allows for a rate of diversion up to 414 CFS. (414 CFS in 24 hours is approximately 820 acre-feet per day)
- WID & EBMUD have water agreements under which EBMUD must ensure that a Permanent Regulated Base Supply (RBS) of water is available for diversion by WID each year.
- The amount of RBS is 60,000 AF of water during a wet year / 39,000 AF in a dry year.
- RBS is not the full extent of WID's surface water rights; WID has diverted more than 60,000 AF in 13 years since 1993. Total annual diversions in those years ranged from 61,347 to 88,056 AF.
- WID manages the Lodi Lake level, WID Diversion and JSA flows below WID Dam with daily coordination with EBMUD.

2003 New Dam & 2007 Fish Screen Project

- The New Dam and Fish Screen Project cost the District over 15 million to complete. WID currently has outstanding debt of approximately 13 million.



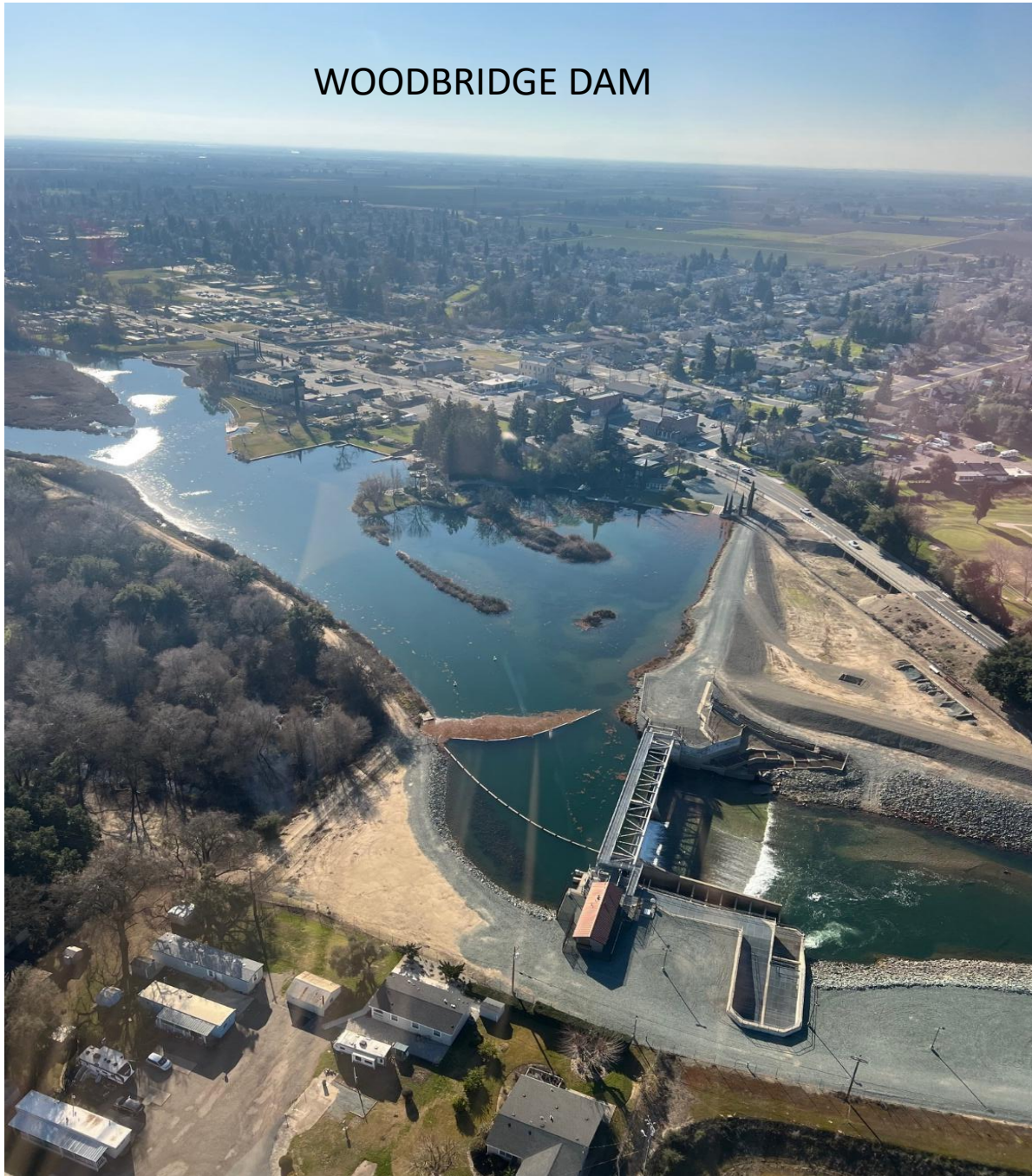








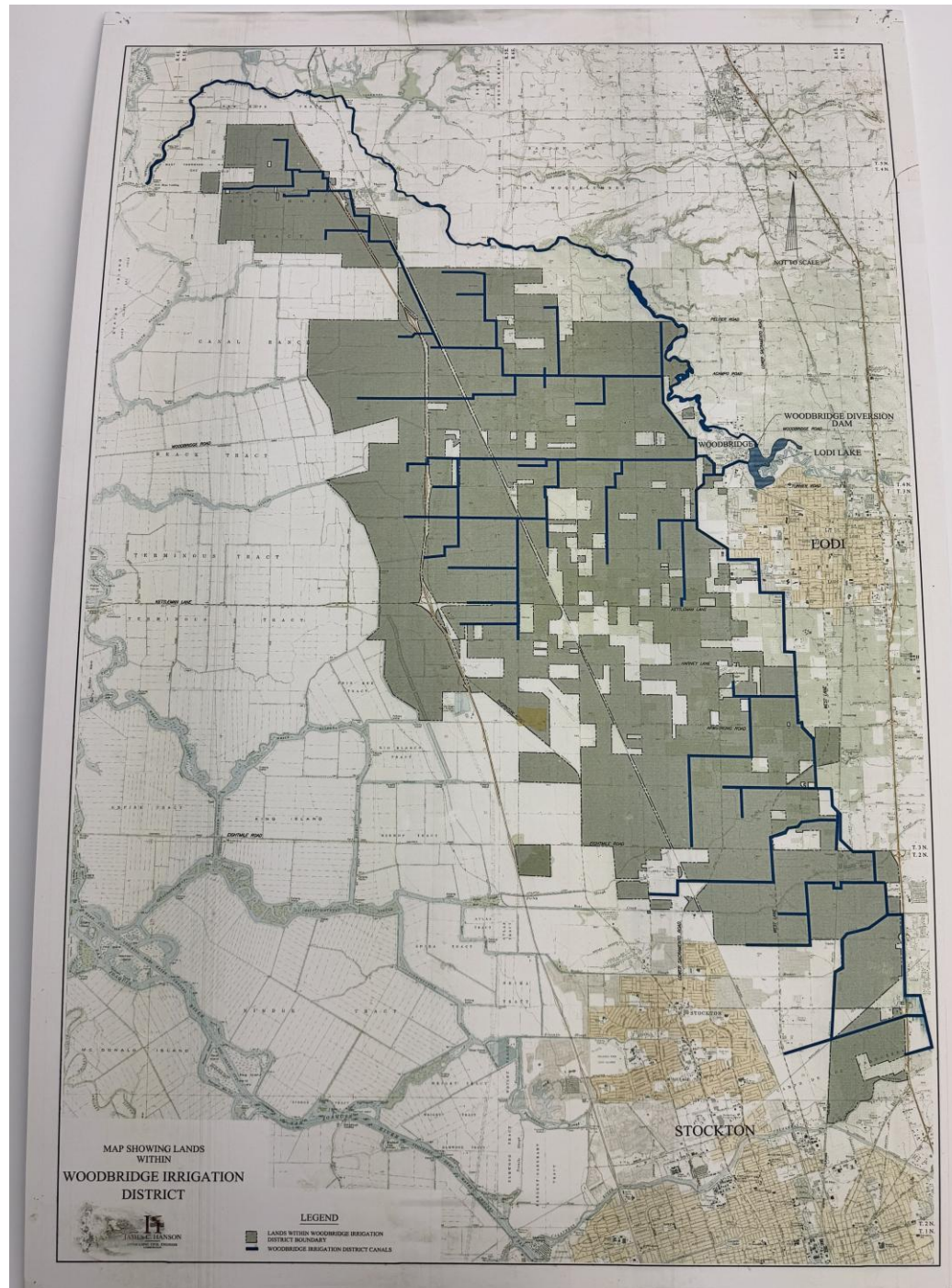
WOODBIDGE DAM



WID OFFICE / FISH SCREEN



WID Laterals and Lands within the District

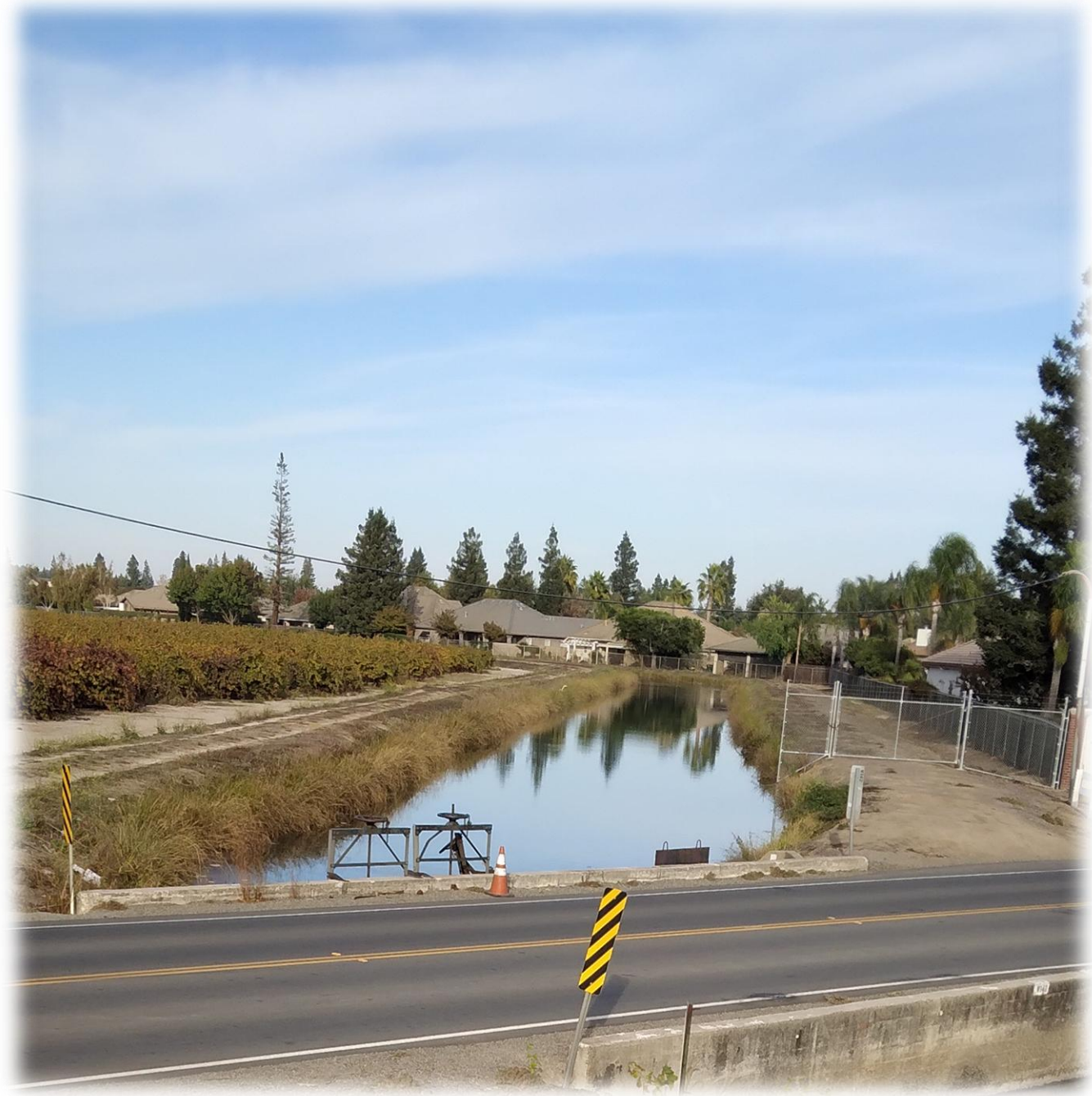


Facts about WID:

- The District is the supplier of surface water from the Mokelumne River for approximately 13,000 acres of farmland.
- The District supplies Mokelumne River surface water to the City of Lodi & Stockton for municipal use.
- The District's geographical boundary encompasses an area of approx. 63 square miles. From Thornton to the North, Stockton to the South. west of I-5 to the West, and the South Main Canal to the East. There are approx. 75 miles of earthen unlined canals that hold and deliver water.
- WID staff builds and engineers screened takeout boxes & gates, and wet wells for irrigation and pipeline installations.



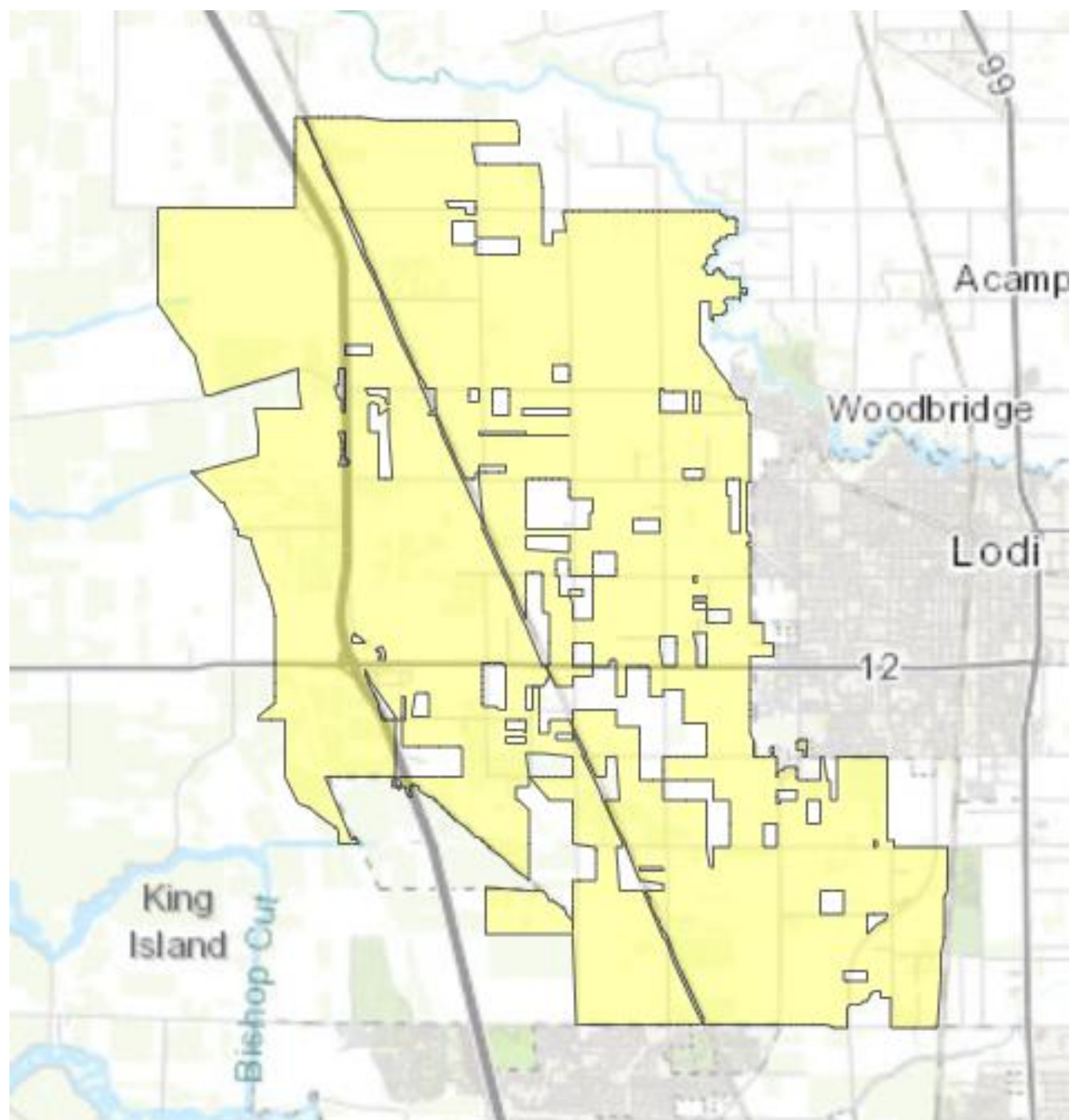




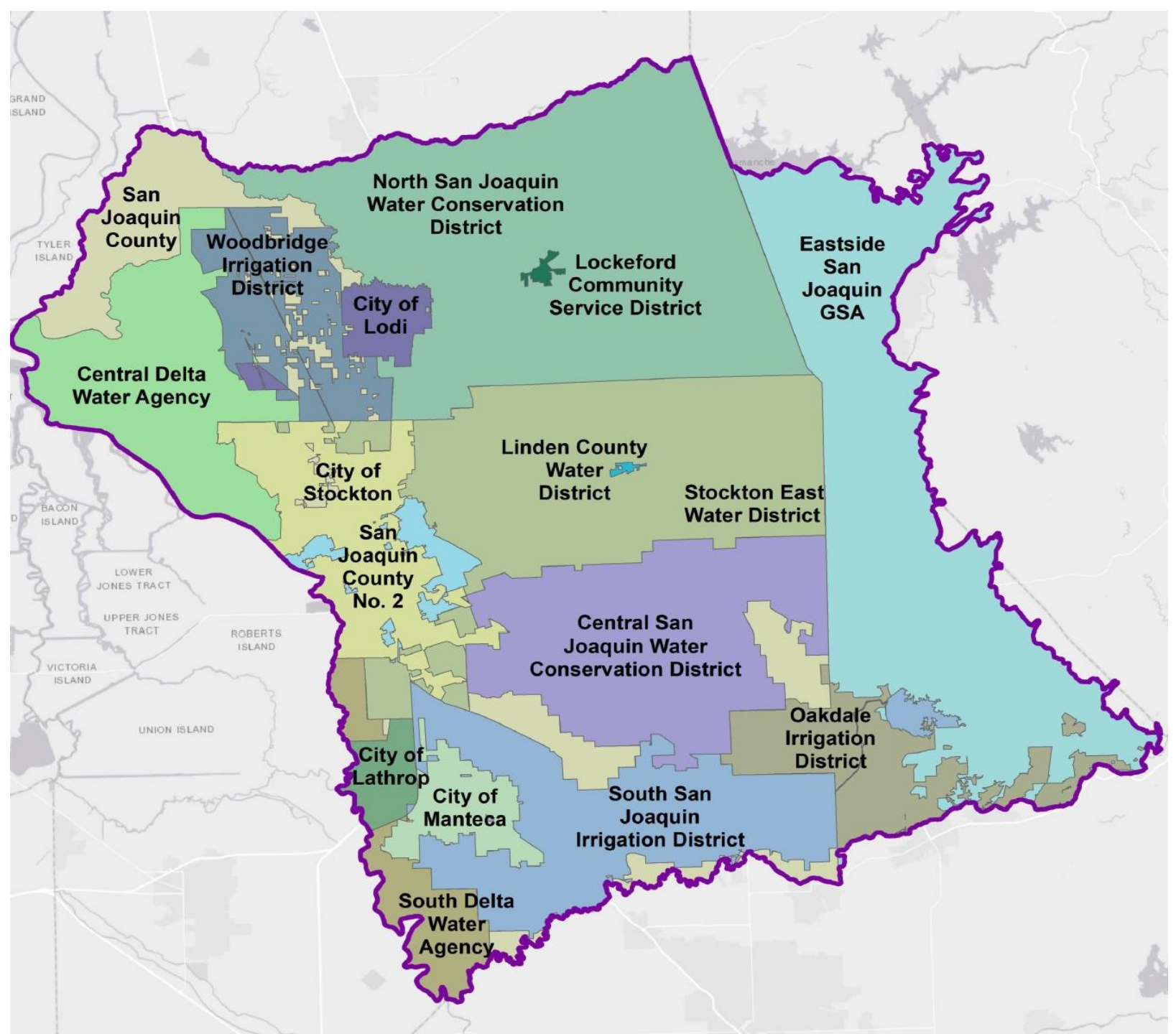


WID GSA

WID's District Boundary and their GSA Boundary are not the same.



Eastern San Joaquin Subbasin



WID contributions that benefit the Eastern San Joaquin Subbasin

- WID serves both the City of Lodi & The City of Stockton with surface water for treatment and delivery to area residents (vs. using groundwater pumping)
- WID has miles of unlined canals between Thornton and Stockton that carry water during irrigation season, that helps replenish the Eastern San Joaquin subbasin.
- Within the WID GSA, WID estimates the amount of surface area of opened unlined canals to be approximately 50 miles. This is equivalent to 115 acres or approximately 87 football fields.
- City of Stockton's new recharge basins are approx. 35 football fields; North San Joaquin's Lakso project is 80 ac or approx. 60 football fields.

WID GSA future projects:

- WID is working on a project within the WID GSA, utilizing owned property to provide surface water for conveyance facilities as well as groundwater recharge. This is in addition to open unlined canals that we have applied water to for over 100+years.
- WID will work with the GSA's for possible sales of WID surface water for groundwater recharge, when available?
- WID is expanding their conveyance systems to reach new lands that have previously not had a second source of water, giving landowners an option to use surface water vs. pumping groundwater.





WOODBIDGE IRRIGATION DISTRICT



Thank You

- Keith Bussman, WID General Manager
- Office: 209-625-8438
- Cell: 209-477-3161
- Email: bussmanwid@gmail.com
- Website: woodbridgeirrigation.org